

## General

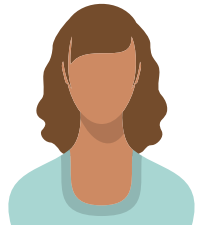
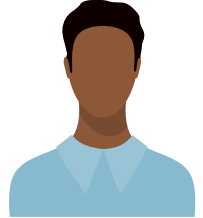
### WHAT IS SEXUAL ABUSE OR ASSAULT?

Sexual abuse is the term used when referring to children under the age of 18 years old. It is also sometimes used when talking about individuals with intellectual and/or developmental disabilities who are adults.

Sexual assault is the term that is used when talking about adults.

Examples of sexual abuse and/or assault:

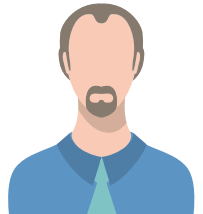
- Someone looks at your private parts (parts covered by a bathing suit), or asks to look at your private parts.
- Someone wants you to look at their private parts, or shows you their private parts.
- Someone wants to take pictures or videos of you without your clothes on, or shows you pictures or videos of other people without their clothes on, or people engaging in sexual acts.
- Someone wants to touch or kiss you on your private parts, or they touch or kiss your private parts.
- Someone wants you to touch or kiss their private parts, or they make you touch or kiss their private parts.



### HOW OFTEN DOES SEXUAL ABUSE/ASSAULT HAPPEN?

The following statistics were provided by RAINN (Rape, Abuse, & Incest National Network):

- Every 73 seconds another American is sexually assaulted.
- 1 out of every 6 American women has been the victim of an attempted or completed rape
- About 3% of American men—or 1 in 33—have experienced an attempted or completed rape
- From 2009-2013, 63,000 children a year were victims of sexual abuse.



According to a report done by NPR, people with intellectual disabilities are sexually assaulted at a rate seven times higher than those without disabilities.

### WHAT IS CONSENT?

Consent is an agreement between two people to engage in sexual activity.

- In Pennsylvania, children less than 13 years old cannot give consent to sexual activity.
- Teens ages 13-15 years old cannot consent to sexual activities with anyone who is 4 or more years older than them.
- People ages 16 years and older can legally consent to sexual activity.



Depending on the relationship between people, there may be power imbalances that make consent impossible, no matter how old the individuals are. For example:

- It's considered felony institutional sexual assault when an employee of a school, state/county jail, personal care/group home, or other licensed residential facility serving youth engages in sexual activity with anyone receiving services.



For adults with intellectual and/or developmental disabilities, consent can be even more complicated. Adults with disabilities have the right to develop relationships and engage in consensual sexual activities just as any other adult. However, it's important that the individuals are able to provide informed consent.

